



Rumenco Products

28th January 2024

INNOVATIVE NUTRITIONAL SOLUTIONS

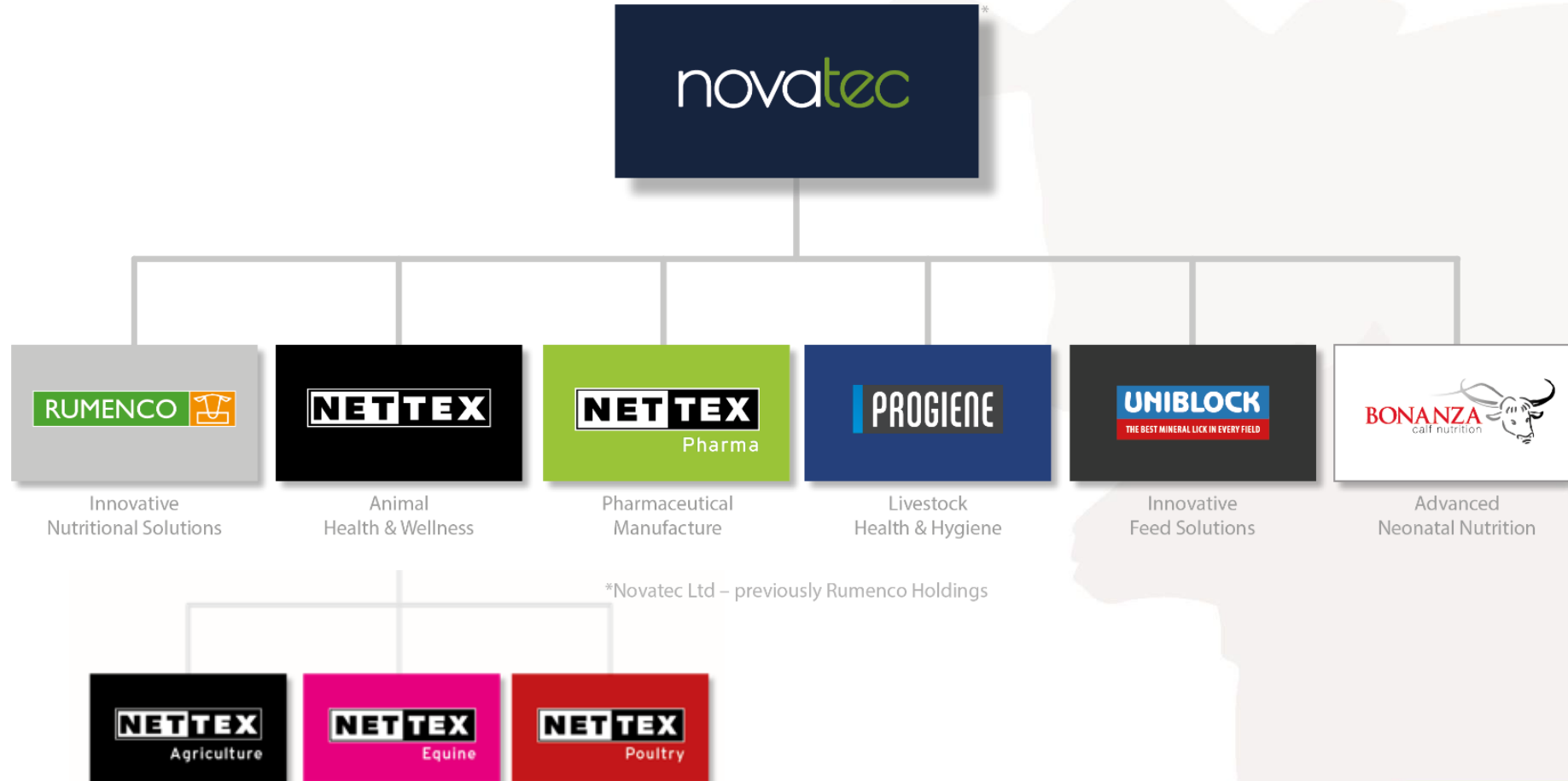
Topics for discussion

- Introduction to Rumenco
- Introduction to supplementary feeding
 - Grass quality and grazing
- Rumevite feed blocks
 - Background story
 - What is Rumevite?
 - Why should you feed blocks?
 - Feeding Rumevite
 - Rumevite products
- Summary



Introduction to Rumenco

Rumenco is part of a larger group of key agricultural brands



Who is Rumenco?

- Based at Burton-on-Trent
- We manufacture:
 - Pressed Feed Blocks
 - Poured and low moisture Feed and mineral buckets
 - Protein Meals
 - Liquid Feeds
- We sell nationally and globally, exclusively through selected merchants
- Marketing leading brands
- Patented manufacturing process
- Unique proven formulations
- Contract manufacture for key customers



Introduction to supplementary feeding

What are supplementary feeds?

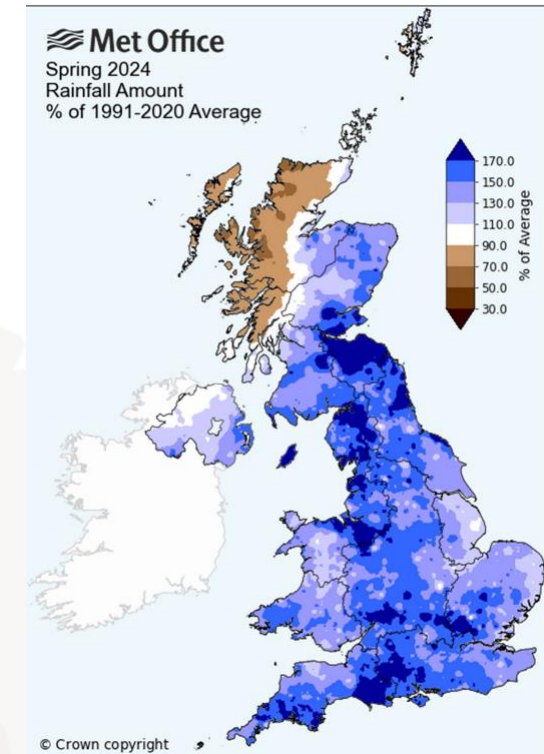
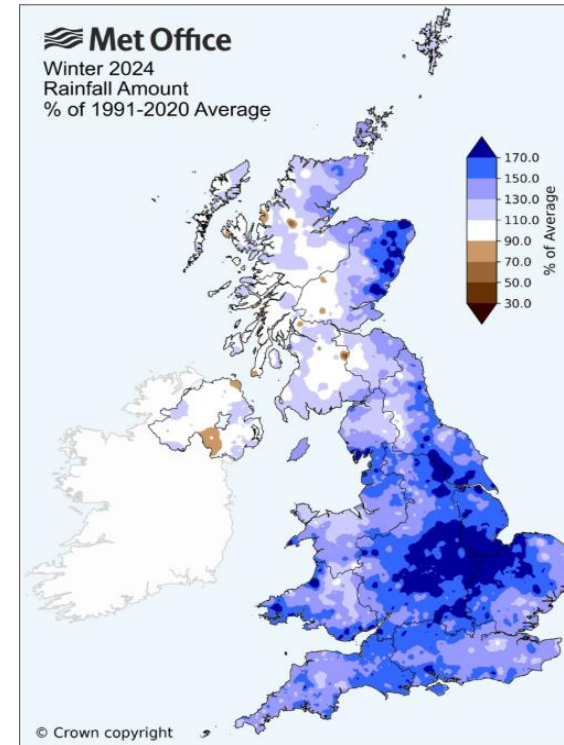
- *Supplement: A feed used with another to improve the nutritive balance or performance of the total diet*
- Offered free-access alongside forages and /or grazing
- Used to correct nutritional deficiencies
- Provide extra nutrients to benefit the animal
 - Feed supplements - protein & energy
 - Mineral supplements – macrominerals, trace elements, vitamins
- Improve feed utilisation
- Feed & mineral blocks & buckets
- Liquid feeds
- Mineral powders in-feed, free-access & mineral meals

EU regulatory definitions

- **‘Complementary feed’** compound feed which has a high content of certain substances, which by reason of its composition, is sufficient for a daily ration only if used in combination with other feed
- **‘Mineral feed’** means complementary feed containing at least 40 % crude ash.
- **‘Premix’** means mixtures of feed additives or mixtures of one or more feed additives with feed materials or water used as carriers, not intended for direct feeding to animals;
- **‘Feed additive’** substances, micro-organisms or preparations, other than feed material and premixtures, which are intentionally added to feed or water in order to perform, in particular, one or more of the functions (mentioned in Article 5(3))

Grass quality and grazing

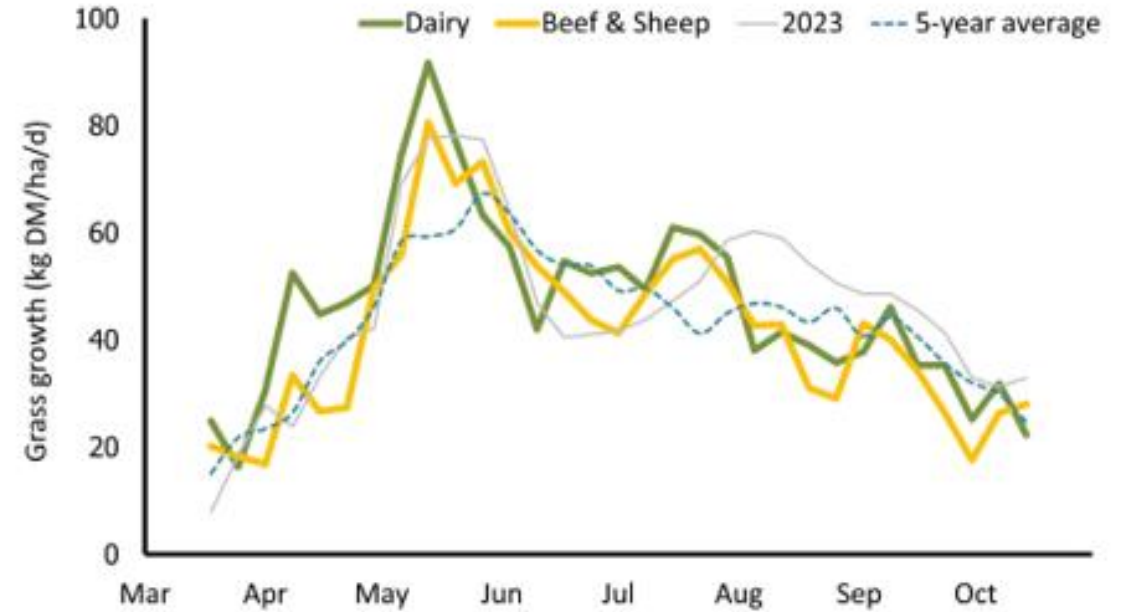
- **Winter**
 - 8th wettest winter on record (30% more rainfall than average)
 - 5th warmest winter on record
- **Spring**
 - 6th wettest April on record (55% more rainfall than average, more than double in some areas)
 - Dull - 17% less sunshine than average
- **Implications**
 - Mature 'fibrous' grazing
 - Reduced sugar levels in grazing
 - Delayed turnout
 - Poaching
 - Increased risk of lameness, mastitis and several parasites.



Seasonal influences

	2023	2024
DM (%)	30.9	33.7
CP (% DM)	14.3	14.4
D-value (%)	69.4	68.6
ME (MJ/kg DM)	11.1	11
Sugars (% DM)	0.9	1.7
NDF (% DM)	44.5	46.7
Lignin (g/kg DM)	40.1	38.4

Source: Trouw Nutrition



- Grass growth is generally above average, but quality is down (low in energy, protein and sugar)
- First cut silages delayed – more fibrous and less digestible

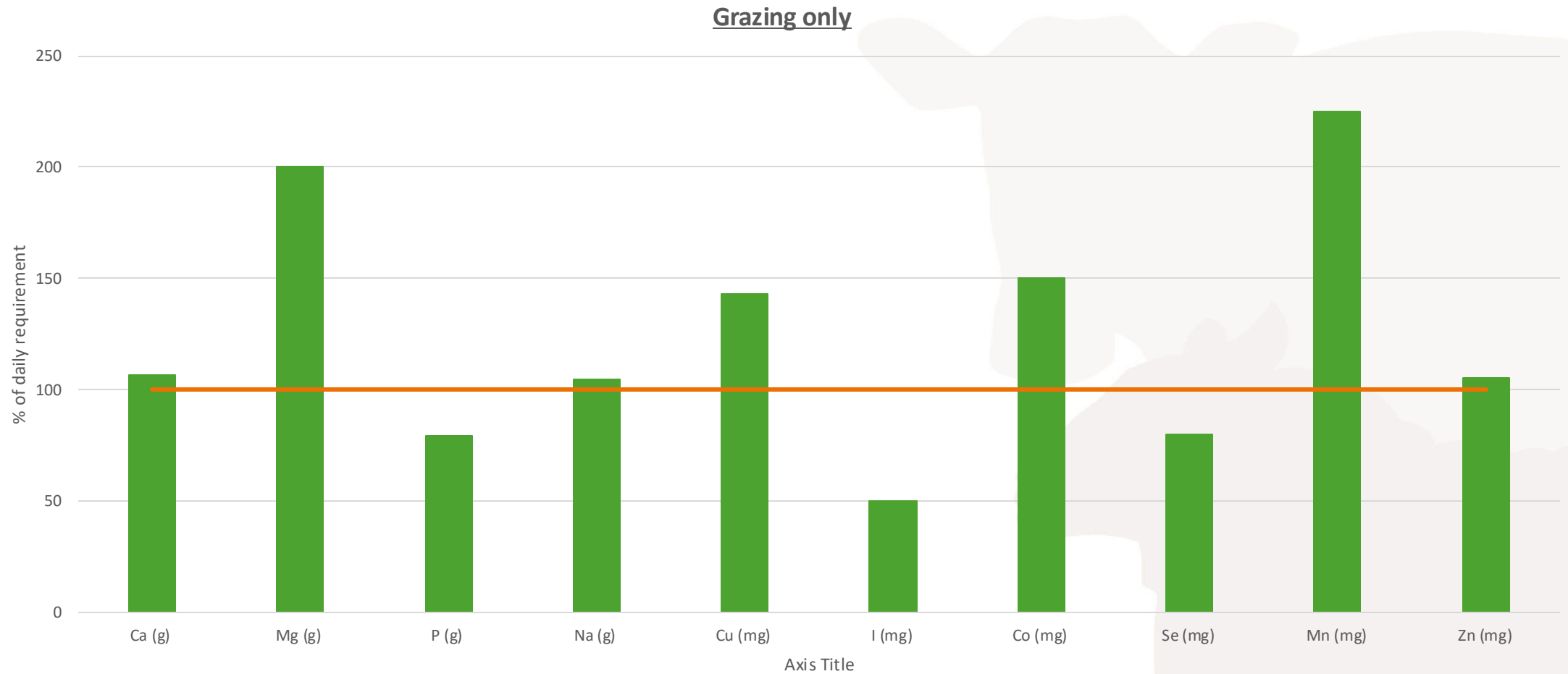
Why use supplementary feeds

- Grass is one of the most important feed resources for all livestock and offers one of the most economic feeds throughout the year. However, it does not always supply enough nutrients.
- Using supplementary feeds helps to:
 - Supply missing nutrients in forages and grazing
 - Supply extra nutrients at key times
 - Solve and prevent problems
 - Manipulate grazing
 - Improve health, fertility, production, appearance
 - Make life easier for the farmer!

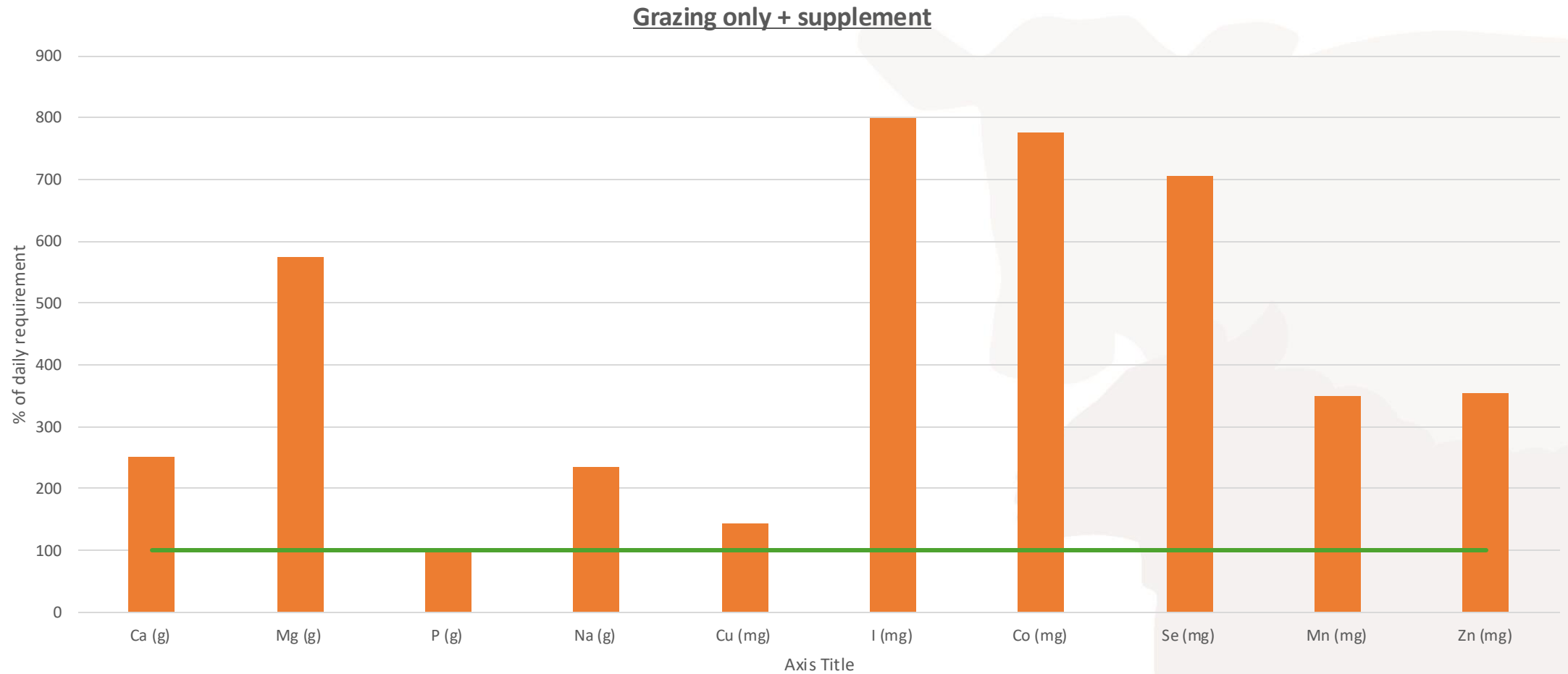
Bridge the gap!

- Feeding just forage alone can often fall short of the animals' requirements
- Poorer quality forages such as hill pastures can be deficient in certain vitamins and trace elements
- Providing supplementary feeds alongside forages can help 'top up' nutrients

Grazing only



Grazing only + supplement



Benefits of supplementation

- Lower cost than alternative systems, same result
- Feed availability 24/7 helps prevent bullying at troughs and promotes rumen performance
- Better forage and grazing utilization
- Improved animal performance
- Blocks & buckets are weatherproof, convenient & labour saving
- Daily requirement of mins, vits & trace elements

Rumevite



The Feedblock Story

- First trials conducted in South Africa 1960
 - Utilised as early as 1930s
- Early blocks contained just urea & salts
- Addition of molasses & minerals came later
- Variations occur across the world
- Block hard enough to ensure animal gets slow release of nutrients
 - Increases the efficiency of utilisation of these nutrients
- Rumevite launched in UK 1965
- Over the next 50+ years hundreds of trials undertaken
- Continues to be a unique product in the market



The Rumevite Story

- Launched in 1965
- Over the next 50+ years hundreds of trials undertaken
- Continues to be a unique product in the market
- Major product review undertaken in 2009
 - Range aligned with SUPAlyx
 - New feeders designed & given away
 - Gusseted bags launched
 - High Energy and Protein & Energy merged to form HEP
- GrazeDUP & Hill Grazer launched 2015



What is Rumevite?



A pressed 22.5kg block, which contains:

- Ground barley
- Cane molasses
- Protein sources
 - Rapeseed meal
 - Distillers grains
 - Soya bean meal
 - Urea
- Salt
- Mins/ vits & trace elements
- Optional added 'extras'

With optional added extras...

- Calcium palm oil (protected fat)
 - By-pass energy for growth & production
- Fish oil (Sheep Super)
 - Extra energy and supports fertility
- Protected trace elements
 - Problem prevention/solvers
- Fermentation products
 - Improve fibre digestion and rumen health



How do feed blocks work?

Blocks & Buckets stimulate the rumen to work harder

- Feeds & increases rumen bug population
- → Improves forage intake & digestion (↑ 10%)
- Improved grass utilisation provides more nutrients
- → higher performance, better health and fertility
- Little & often feeding improves rumen environment
- → Less pH variation in the rumen



Urea

- An economic Nitrogen (protein) source
- Every 1% urea in a ration is worth 2.87% crude protein (PE of urea)
- Urea contains no energy or minerals
- Urea is totally safe when mixed with energy sources
- Urea must be used in conjunction with **Sulphur** minerals
- Urea has been shown to improve the intake and digestibility of low protein forages



Research



Rumevite Stimulates the Rumen to Work Harder

- The combination of protein & energy along with the little & often feeding fuels & increases the rumen bug population

	Cellulolytic bacteria /ml	
Hay	15 x 10 ⁹	
Hay + Rumevite	18.1 x 10 ⁹	+21%

Time after feeding (hrs)	Control	Rumevite	P-Value
a	3.0	2.8	0.600
b	97.3	96.3	0.220
c	0.030 ^a	0.042 ^b	<0.001
lag	17.7	20.1	0.116

Rumevite 14"

- Recently launched
- Different size, same weight- Block in a Bucket
- Sell the system
 - New containers available
- Addition of **Phytotec**
 - An all natural blend of plant extracts, essential oils & fermentation products. Ingredients chosen to support feed conversion, fibre digestion, rumen health and production
 - Exclusive to Maxx & Rumevite

Rumevite Vs Compound

- Rumevite are approx. 1.75 times the cost of concentrate, but are worth 2-3 x more
- Blocks improve forage/pasture value
- Blocks are proven in research, field trials and on 000's of farms since 1962

Blocks save concentrates

Example - Youngstock

- 3 blocks/ 20 head/week = approx. 480 g/head/day
- Blocks replace 3 X its weight in concs = approx. 1.5 kg/cow/day
- Costs: Cattle Booster £878.40/pallet* = approx. 41.6p/day
- Costs: Compound £300/t = approx. 45p/day
- Extra forage intake with block costs approx. 2p/day

*Oct 2024 price list

Rumenvite can save sheep feed

Example - Ewe

- 3-4 blocks/100 ewes/week = approx. 112g/ewe/day
- Rumenvite replaces 3X its own weight of feed = 336g/ewe/day
- Costs: Rumenvite All Season £765.00/ pallet = 8.46p/day
- Costs: Compound feed £310/t = 10.4p/day
- Extra forage intake with Rumenvite costs approx 0.5p/day

*Oct 2024 price list

Summary: benefits of pressed blocks supplements

1. Lower cost than alternative systems, same result
2. Traditional, consistent, research proven & works
3. Feed availability 24/7, prevents bullying at troughs and promotes rumen performance
4. Better forage and grazing utilization
5. Increased & better use of home-grown forages
6. Blocks are weatherproof and labour/time saving
7. Supports rumen health
8. Provides mineral and vitamin supplementation
9. Reduced bought in concentrate feeds
10. Reduce concern regarding plastic use on farm



Rumevite Range

8 products to suit all situations

- All Season (High Energy & Protein)
- Sheep Super (Sheep Super Energy Plus Fish Oil)
- Cattle Booster
- Mag Booster
- Quality Lamb
- Hill Grazer
- Graze DUP
- Magnesium



Rumenvite range

- All Season
 - A general all rounder, ideal alongside poorer quality forages
 - 22% protein (natural & urea), 12.5 ME, Protected zinc
- Sheep Super Energy Plus Fish Oil
 - Topping, pre-lambing, replacement ewe lamb
 - 18% protein (natural & urea), 13 ME & fish oil
- Cattle Booster
 - Dairy and suckler cows, growing youngstock
 - 20% protein (natural & urea), 12.5 ME, copper & protected zinc
- Mag Booster
 - Grass staggers, autumn grazing
 - 8.5% magnesium, 15% protein (natural & urea) & 9ME



Rumenvite range

- Quality Lamb
 - Growing and finishing lambs post weaning, flock replacements
 - 18% all natural protein, 13 ME, fermentation product & vit B1 & Availa zinc
- Hill Grazer
 - Rough hill grazing situations cattle & sheep
 - 23% protein (5.7% urea) fermentation product
- Graze DUP
 - Supports milk production post-lambing – can replace trough feeding
 - 16% all natural protein & 13 ME, rumen-protected methionine
- Magnesium
 - 12% magnesium
 - Mineral-vitamin block, grass staggers



Rumenvite Intakes

- **Cattle**
 - Beef and Dairy: 300 – 500 g/h/d
 - 5 – 9 blocks/ 15 head/ month
 - Growing cattle: 200 – 300 g/h/d
 - 3 – 5 blocks/ 15 head/ month
- **Sheep**
 - Ewes: 60 – 300 g/h/d
 - 4 – 11 blocks/ 35 head/ month
 - Lambs: 100 – 150 g/h/d
 - 4 – 7 blocks/ 35 head/ month

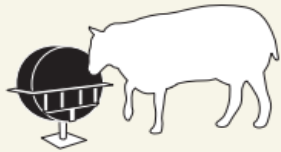


Rumenvite Feeding recommendations

- Offer in Rumenvite feeders to help control intakes & reduce contamination and waste
- One block per 35 head of sheep, or 15 head of cattle
- Ensure ad lib forage is always available
- Block siting: over total grazed area and away from water supply
- For where badgers present and issue, offer in Rumenvite badger Blocker feeder



Types of Rumevite Feeders



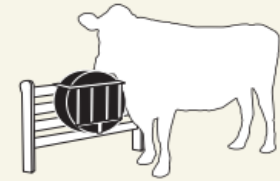
Rumevite Spike Feeder

- Ideal for stock at grass and on root/forage crops
- Keeps blocks clean and dry and controls consumption



Rumevite Block Feeder

- Use at grass with stock to prevent block biting and wastage
- Site over the total grazing area in order to avoid poaching the ground



Rumevite Wall / Gate Mounted Feeder

- Ideal for feeding Rumevite to stock indoors
- Fix to the feed barrier or gate at head height for cattle
- Keeps blocks clean and dry and controls consumption

Rumevite All Season

Rumenvite All Season*

- High energy and protein feed and mineral block
- 22.5kg
- Original 19" shape & new 14" shape
- 18 month shelf life
- Ideal for:
 - Mixed grazing situations
 - Breeding ewes after tugging throughout the mid-pregnancy period
 - All cattle over 3 months of age from mid-summer onwards where no copper is required
 - Not suitable for sheep under 3 months of age
- Intakes:
 - Sheep: up to 200 g/h/d
 - Cattle: up to 500 g/h/d



*Previously High Energy & Protein (HEP)

Rumevite All Season: features and benefits

Crude protein %	22
Urea %	4
Crude fat %	3
Crude ash %	21
Energy (MJ ME/kg DM)	12.5
Calcium %	4
Phosphorus %	0.3
Magnesium %	1.5
Sodium %	2.7
Selenium mg/kg	5
Cobalt mg/kg	5
Iodine mg/kg	40
Manganese mg/kg	500
Zinc* mg/kg	1,000
Vitamin A iu/kg	50,000
Vitamin D ₃ iu/kg	10,000
Vitamin E iu/kg	250

*Contains protected zinc

- A general all-rounder, ideal alongside poorer quality forages
- 22% protein (Natural and urea sources)
 - Urea protein helps improve digestibility of poor quality forages
- 12.5 ME from several sources
 - Helps maintain body condition and supports growth rates
- Fortified with mins, vits & trace elements
 - Complements levels found in grazing & forages
 - No extra supplementation required
 - Supports overall animal health
- Protected zinc
 - Highly available source of zinc supports animal health
- 14" contains Phytotec

Rumevite Sheep Super

Rumenvite Sheep Super*

- Extra high energy feed and mineral block containing fish oil
- 22.5kg
- Original 19" shape & new 14" shape
- 18 month shelf life
- Ideal for:
 - 2 weeks pre-tupping for 8 weeks
 - Final 6 weeks pre-lambing
 - Replacement ewe lambs
 - Weaned lambs
 - Not suitable for sheep under 3 months of age
- Intakes:
 - Sheep: up to 300 g/h/d



*Previously Sheep Super Energy Plus Fish Oil

Rumevite Sheep Super- features and benefits

Crude protein %	18
Urea %	2.5
Crude fat %	7
Crude ash %	19
Energy (MJ ME/kg DM)	13
Calcium %	3.3
Phosphorus %	0.27
Magnesium %	2
Sodium %	2.7
Selenium mg/kg	2.5
Cobalt mg/kg	2.5
Iodine mg/kg	20
Manganese mg/kg	250
Zinc* mg/kg	500
Vitamin A iu/kg	25,000
Vitamin D ₃ iu/kg	5,000
Vitamin E iu/kg	500

*Contains protected zinc

- Proven to increase live lambs born by up to 22%*
**Independent trial compared to no supplementation.*
- 18% protein (Natural and urea sources)
 - Supports milk production and good frame growth
- 13 ME from several sources
 - Helps maintain growth
 - Support ewes at tuppung time & Where there is a risk of twin-lamb disease
 - Supports growth performance for flock replacements & weaned lambs
- Fortified with mins, vits & trace elements
 - Complements levels found in grazing & forages
 - No extra supplementation required
 - Supports overall animal health
- Contains fish oil as source of omega-3 fatty acids
 - Supports fertility & conception rates
- Includes protected zinc
 - Supports fertility and hoof health
- 14” Contains Phytotec

Tupping benefits

- Improves performance
- Maintains BCS during tupping & beyond
- Supports early pregnancy
- Balances grazing
- Provides mins, vits & trace elements
- 15 extra lambs per 100 ewes tupped
- More compact lambing period
- Less barren ewes
- Very cost-effective
- Suitable for mid-pregnancy

Pre-lambing benefits

- Less bullying, 24/7 access
- Less disruption and barging vs. trough feeding
- Encourages full utilisation of grazing & forage
- Reduces use of hard feeds
 - Singles require no hard feed
- Improves performance
- More even nutrition
- Less pregnancy toxaemia, prolapse, hypocalcaemia
- Shy feeders get their share

Rumevite Cattle Booster

Rumenvite Cattle Booster

- High energy and protein feed and mineral block for cattle
- 22.5kg
- New 14" shape
- 18 month shelf life
- Ideal for:
 - All breeding stock, including bulls, in the run-up to and during bulling time
 - Replacement heifers
 - Growing and finishing cattle
- Intakes:
 - Cattle: up to 500 g/h/d



Rumevite Cattle Booster: features and benefits

Crude protein %	20
Urea %	4.1
Crude fat %	7
Crude ash %	22
Energy (MJ ME/kg DM)	12.5
Calcium %	4
Phosphorus %	0.27
Magnesium %	4
Sodium %	2
Selenium mg/kg	5
Cobalt mg/kg	5
Iodine mg/kg	40
Manganese mg/kg	800
Zinc* mg/kg	1,000
Copper mg/kg	500
Vitamin A iu/kg	50,000
Vitamin D ₃ iu/kg	10,000
Vitamin E iu/kg	250

*Contains protected zinc

- 20% protein (Natural & urea sources)
 - Help complement lower quality grazing/forages to support feed digestion and animal performance
- 12.5 ME from several sources
 - Helps support optimal body condition score, fertility, growth performance and milk production.
- Contains added copper
 - Supports fertility in breeding cattle
 - Support target DLWG in growing cattle
- Includes protected zinc
 - Supports hoof & udder health
- Fortified with mins, vits & trace elements
 - Complements levels found in grazing & forages
 - No extra supplementation required
 - Supports overall animal health
- 14” Contains Phytotec

Heifer benefits

- Proven to replace up to 1.5 kg/day trough feed
- Maximises grass & forage utilisation
- Optimises DLWG by up to 0.36 kg Vs forage alone
- Help animals meet growth targets
- Feed Rumevite over winter to growing stock
- More even group performance



Rumenvite for dairy heifers @ grass

	Farm 1	Farm 2
Average Rumenvite intake (kg/h/d)	0.20	0.24
Average DLWG - Rumenvite	0.70 (SD = 0.16)	0.66 (SD = 0.13)
Average DLWG – Control	0.34 (SD = 0.17)	0.43 (SD = 0.14)
Rumenvite advantage	+ 0.36	+ 0.23

Beef cows and suckler benefits

- Suckler cows autumn/winter grazing
- Heifers/thin cows
- Higher milk yield - heavier calves at weaning
- Better cow condition
- Optimise cow fertility



Rumevite for Beef at Grass

Performance

	Grazing only	Grazing + Rumevite
Liveweight @ start (kg)	304.6	304.6
Liveweight @ housing (kg)	359.1	384.4
Liveweight gain (kg)	54.5	79.8
DLWG (105 days - kg)	0.52 (SD = 0.18)	0.76 (+ 46%) (SD = 0.16)

- 156 cattle, 5 farms
- Rumevite introduced mid-summer

Rumevite for Beef at Grass

Cost of supplementary feeding

	Grazing only	Grazing + Rumevite
Daily intake (kg/h/d)	-	0.36
Total block intake – 105 days (kg/h)	-	37.8
Total cost @ £18.12/block (HEP)	-	£30.44
Value of LWG @ £2.40/kg	£130.80	£191.52
Margin over feed (£/hd)	£130.80	£161.08

Consequences of Poor Growth at Grass

	Grazing only	Grazing + Rumevite
Weight @ yarding (kg)	360	385
Housed period @ 0.9 kg/h/d to 500 kg	155 days	127 days
Extra silage needed	0.67 tonnes*	
Extra concentrate needed	90 kg*	

- Additional cost £36.55/head
 - Based on silage @ £25/t and concentrate @ £220 /t

Supplementary Feeding Cattle at Pasture

	Control	Rumevite
Pasture	Ad lib	Ad lib
Cereal kg/day	2.7	0.9
Hay kg/day	4.1	2.7
Rumevite kg/day		0.2
ADG kg/day	0.33	0.36

Supplementary Feeding Cattle at Grass

	Control	Rumevite	Difference
Hay kg/day November only	3.0	3.0	
Rumevite kg/day		0.9	
ADG Jul-Sept	0.70	0.88	+ 25.8 %
ADG Sept-Oct	0.46	0.61	+ 31.6 %
ADG Oct-Nov	0.35	0.54	+ 53.2 %
Mean Jul-Nov	0.50	0.70	+ 40 %

Rumevite Mag Booster

Rumevite Mag Booster

- High magnesium feed and mineral block
- 22.5kg
- New 14" shape
- 18 month shelf life
- Ideal for:
 - Breeding and lactating cows and heifers risk of grass staggers during the spring and autumn
 - Ewes post-lambing
- Intakes:
 - Sheep: up to 100g/h/d
 - Cattle: up to 500 g/h/d



Rumevite Mag Booster: features and benefits

Crude protein %	15
Urea %	2.5
Crude fat %	1
Crude ash %	31
Energy (MJ ME/kg DM)	9.0
Calcium %	3.4
Phosphorus %	0.25
Magnesium %	8.5
Sodium %	2.3
Selenium mg/kg	5
Cobalt mg/kg	5
Iodine mg/kg	40
Manganese mg/kg	500
Zinc* mg/kg	1,000
Vitamin A iu/kg	50,000
Vitamin D ₃ iu/kg	10,000
Vitamin E iu/kg	250

- 8.5% bioavailable magnesium
 - High level of palatable magnesium for use where there is a risk of grass staggers, especially lactating livestock
- 15% protein (natural protein and urea)
 - Help complement lower quality grazing/forages to support feed digestion and animal performance
- 9 ME from several sources
 - Help support animal performance, particularly during autumn as grazing quality declines
- Fortified with mins, vits & trace elements including protected zinc
 - Complements levels found in grazing & forages

Rumevite Quality Lamb

Rumevite Quality lamb: features and benefits

- Specialist high protein and energy feed and mineral block, containing fermented product, formulated for growing and finishing lambs
- 22.5kg
- new 14" shape
- 18 month shelf life
- Ideal for:
 - Growing and finishing lambs post-weaning on grass and fodder crops as a replacement for concentrate, or where extra supplementation is required
 - Flock replacements- ewe and ram lambs being retained for breeding
- Intakes:
 - Growing and finishing lambs: up to 300 g/h/d
 - Flock replacements: up to 200g/h/d



Rumevite Quality Lamb

Crude protein %	18
Crude fat %	8
Crude ash %	17
Energy (MJ ME/kg DM)	13
Calcium %	4
Phosphorus %	0.8
Magnesium %	0.2
Sodium %	2.0
Selenium mg/kg	1
Cobalt mg/kg	1
Iodine mg/kg	6
Manganese mg/kg	100
Zinc* mg/kg	500
Vitamin A iu/kg	10,000
Vitamin D ₃ iu/kg	2,000
Vitamin E iu/kg	100
Vitamin B ₁ mg/kg	20

*Includes Availa® Zinc

- 18% all natural protein
 - Complements grazing and forages
 - Supports good frame growth and lean tissue (muscle) development
- 13 ME from multiple sources
 - helps support fat cover ready for finishing
- Ideal mineral and vitamin profile for growing and finishing lambs
 - Vitamin B1 where there is a CCN risk
 - Availa zinc - supports hoof health & integrity
- Contains fermentation product (celmanax) to optimize rumen function
 - Proven to double weaned lamb daily liveweight gain*
**Independent trial compared to no supplementation*
- Contains Phytotec

Finishing Trial 2016

	Control	Quality Lamb	Maxx Energy
Birthweight	20.89	21.62	19.25
Weaning weight	31.05	29.76	28.31
Finishing weight	43.79	44.18	43.29
Weaning → Finish	12.74	14.42	14.98
Days on farm	309.3	221.88	290.95
Average DLWG	0.07	0.102	0.083
Total animals	350	250	246

Post-lambing benefits

- Rumevite fed ewes yield better quality milk
- Less mis-mothering after turnout
- Faster growing, healthier and heavier lambs
- Feed Rumevite after turnout to save time and disruption



Rumevite Hill Grazer

Rumevite Hill Grazer

- Extra high protein feed and mineral block
- 22.5kg
- Old 19" shape & new 14" shape
- 18 month shelf life
- Ideal for:
 - Cattle and sheep in rough hill grazing situations,
 - In-lamb ewes throughout mid-pregnancy
- Intakes:
 - Cattle up to 150g/h/d
 - Sheep up to 150g/h/day



Rumevite Hill Grazer

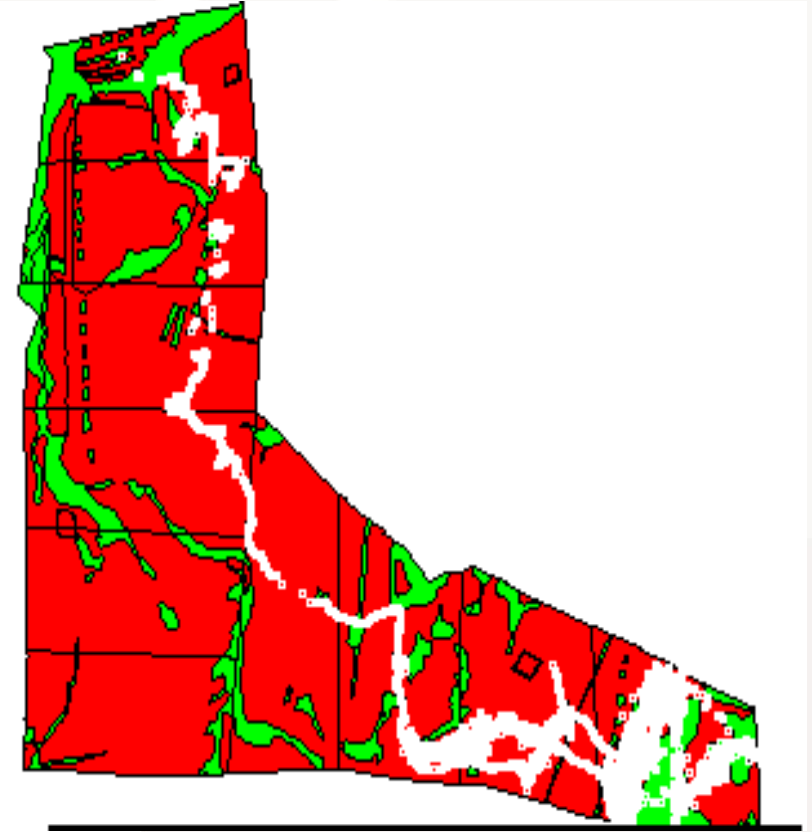
Crude protein %	23
Urea %	5.7
Crude fat %	1.5
Crude ash %	33
Calcium %	6
Phosphorus %	0.7
Magnesium %	1.5
Sodium %	5.4
Selenium mg/kg	5
Cobalt mg/kg	5
Iodine mg/kg	40
Manganese mg/kg	500
Zinc* mg/kg	1,000
Vitamin A iu/kg	50,000
Vitamin D ₃ iu/kg	10,000
Vitamin E iu/kg	250

*Contains protected zinc

- Extra-high 23% protein
 - Includes 5.7% urea alongside natural protein
 - Support intake & utilisation of low protein hill pastures
 - Supports animal performance
- Contains fermentation product (celmanax)
 - optimises rumen function leading to improved utilisation of poorer quality forage
- Fortified with mins, vits & trace elements
 - Complements levels found in grazing & forages
 - No extra supplementation required
 - Supports overall animal health
- Protected zinc
 - Highly available source of zinc supports animal health
- 14" contains Phytotec

Hill Sheep

- Rumevite helps refresh the parts others can't reach!
- Inaccessible extensive grazing
- Time/labour saving
- Proven by GPS: manipulation of grazing habits



Rumevite GrazeDUP

Rumevite Hill Grazer

- Specialist bypass protein (dup) energy feed and mineral block for ewes and lambs post-post lambing
- 22.5kg
- Old 19" shape & new 14" shape
- 18 month shelf life
- Ideal for:
- Ideal for:
 - Ewes and lamb post-lambing - Use as a LIFELINE Lamb & Ewe follow-on supplement
- Intakes:
 - Sheep up to 150g/h/day



Rumevite Graze DUP: features and benefits

Crude protein %	16
Crude fat %	9.3
Crude ash %	19
Energy (MJ ME/kg DM)	13
Calcium %	3
Phosphorus %	0.5
Magnesium %	2
Sodium %	2.3
Selenium mg/kg	2.5
Cobalt mg/kg	2.5
Iodine mg/kg	20
Manganese mg/kg	250
Zinc mg/kg	500
Vitamin A iu/kg	25,000
Vitamin D ₃ iu/kg	5,000
Vitamin E iu/kg	500
Rumen protected methionine mg/kg	800

- Proven to increase twin lamb weaning weight by 8.4kg*
**Independent trial compared to no supplementation*
- 16% protein and 13 ME
 - 80% rumen by-pass protein
 - Support ewe milk production and suckling lamb growth rates
- Contains rumen-protected methionine
 - First-limiting amino acid to milk production
- Extra-high vitamin E
 - Often deficient in spring grass
- Avoids mis-mothering
- Supports milk production post-lambing
 - Replaces concentrate trough feeding when sward height is 4cm or above
- Contains Phytotec

Graze DUP Study #1 - Results

Treatment	Weaning weight (kg)	Feed block consumption (g/day)
Graze DUP Feed Blocks	39.54	120
Control	37.25	
Difference	+ 2.29 (s.e.d 0.503 kg)	
Statistical significance	P > 0.001	

- Based on over 100 lambs per treatment these results show a biologically significant and relevant increase in lamb weaning weight.

- Financial appraisal
 - 120g /day /ewe
 - = 8.8 p/day (£16.53 /block)
 - = **£2.46 /ewe for 4 weeks**
 - £246 /100 ewes for 4 weeks
- Increase in weaning weight = 2.29kg/lamb
- Value of extra lamb gain @ £1.70 /kg liveweight = £3.89 /lamb
- = £7.79 for twins
- **£5.33 profit/set of twins!**

Graze DUP Study #2 – Results

	Control	Lifeline	Lifeline + GDUP
Ewes at start	114	100	100
Lambs at scanning	228	200	200
Ewes at end	112	99	97
Lambs marking %	183	176	173
Lamb birthweight kg	4.0	4.0	4.0
Lamb wt at 6 weeks	15.2kg	16.0kg	17.4kg
Lamb ADG from birth	362g	381g	414g
Lamb wt at weaning (12w)	27.8kg	28.6kg	32.0kg
Lamb ADG from birth	283g	292g	333g (+18% faster than control)
Block intakes g/ewe/day	-	120	120 + 101

- Lambs from block fed ewes grew 50g/day faster than controls from birth and were 4.2kg heavier at weaning.

Frater, SRUC, 2017

Finishing lambs

- Increases DLWG at grass
- Lambs finish younger
- Improved carcass conformation
- Better health - rumen, feet, parasite



Rumevite Magnesium

Rumevite Magnesium

- High magnesium feed and mineral block
- 22.5kg
- New 14" shape
- 18 month shelf life
- Ideal for:
 - Breeding cows and ewes at risk of grass staggers, especially during spring and autumn
- Intakes:
 - Sheep: up to 60g/h/d
 - Cattle: up to 500 g/h/d



Rumevite Magnesium

Crude protein %	6
Crude fat %	7.7
Crude ash %	39
Energy (MJ ME/kg DM)	10
Calcium %	3.5
Phosphorus %	0.1
Magnesium %	12
Sodium %	4
Selenium mg/kg	25
Cobalt mg/kg	40
Iodine mg/kg	200
Manganese mg/kg	1,000
Zinc mg/kg	2,000
Vitamin A iu/kg	100,000
Vitamin D ₃ iu/kg	20,000
Vitamin E iu/kg	250

- High 12% magnesium
 - Where this is a risk of grass staggers
 - Bioavailable source
- Complete package of minerals & vitamins
- Offer during spring and autumn grass staggers risk period